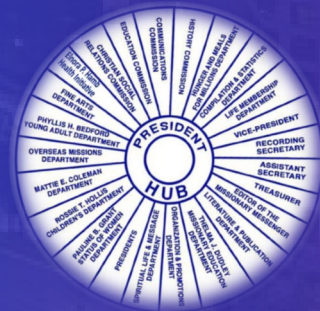




# The Women's Missionary Council

**The President's Report**

**The General Connectional Board  
Christian Methodist Episcopal Church  
September 2-3, 2024 ~ Dallas, TX**



# The Women's Missionary Council

## *The President's Report*




Dr. Jacqueline I. Scott  
International President



Bishop Charley Hames, Jr.  
Patron Bishop



A sunset over a beach with large rock formations in the background. The sky is filled with golden, glowing clouds, and the sun is low on the horizon, casting a warm light over the scene. The ocean waves are visible in the foreground, and the beach is wet, reflecting the light. Large, dark rock formations are silhouetted against the bright sky.

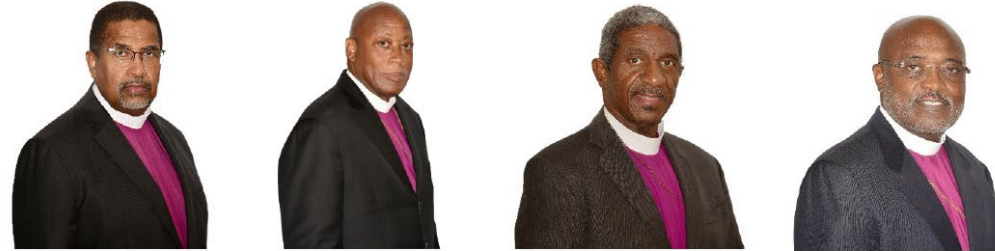
“The LORD is my light and  
my salvation; whom shall I fear?  
the LORD is the strength of my life;  
of whom shall I be afraid?”

Psalms 27:1 KJV





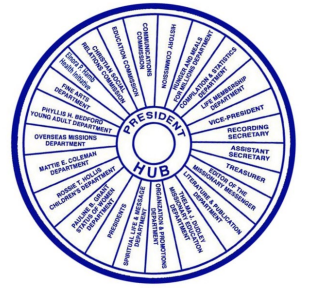
# The College of Bishops








# Patron Bishop Charley Hames & Lady Michelle J. Gaskill-Hames

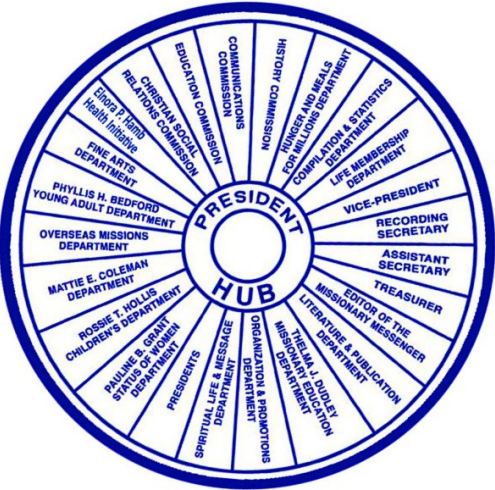




**THANK YOU!**

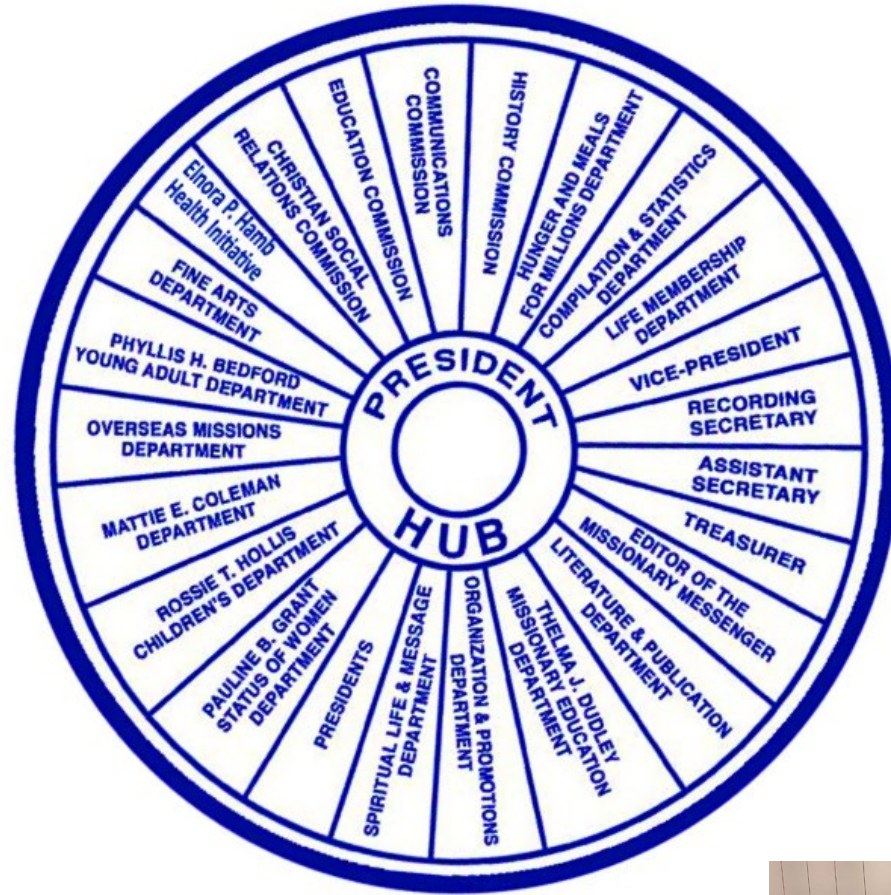


# CELEBRATING THE WOMEN'S MISSIONARY COUNCIL



**SEPTEMBER  
1918-2024**





CHRISTIAN METHODIST EPISCOPAL CHURCH  
**WOMEN'S MISSIONARY COUNCIL**  
**2024 EXECUTIVE BOARD**  
 FEBRUARY 19TH - 24TH • CHARLOTTE, NC  
 DR. JACQUELINE I. SCOTT, INTERNATIONAL PRESIDENT  
 PATRON BISHOP CHARLEY HAMES, JR.  
 BISHOP KWAME L. ADJEI • BISHOP JAMES B. WALKER • SENIOR BISHOP LAWRENCE L. REDDICK, III  
**MISSIONARIES BOLDLY FACING NEW CHALLENGES AS WE SERVE A CHANGING WORLD**



*"May God be Gracious to you and Bless you and make His face Shine upon you!" Psalms 67:1 (NIV)*



**“Here Am I.  
Send Me”**



**ISAIAH 6:8**

Helena B. Cobb

P. Ann Pegues Save Our Sons (SOS)



**Education**

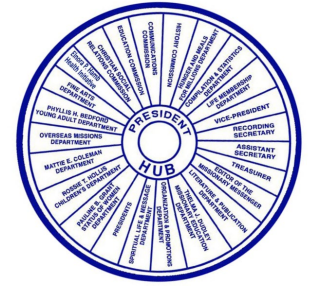


*"The ability to read, write and analyze; the confidence to stand up and demand justice and equality; the qualifications and connections to get your foot in the door and take your seat at the table—all of that start with Education." Michelle Obama*





# FINANCIAL DONATIONS



<b>Helena B. Cobb Scholarship</b>	<b>\$4,000 each</b>
<b>P. Ann Pegues (SOS) Scholarship</b>	<b>\$4,000 each</b>
<b>Higher Education Students</b>	<b>\$29,000</b>
<b>Book Grants (\$200)</b>	<b>\$46,000</b>
<b>Phillips School of Theology Book Scholarship (\$200) (Students Enrolled)</b>	<b>\$4,500</b>



# FINANCIAL DONATIONS



Book	
Zion Community Project, Zion Christian Cemetery	\$ 500
Support of Teachers' Salaries Haiti and the Dominican Republic	\$ 5,040 \$15,000
CDC Community Project Development of the CME Church	\$ 5,000
The Eleventh Episcopal District	\$ 6,000
Mother Liberty's Founders Day	\$ 500
Hunger and Meals for Million	\$ 8,000



# **The Stole Project**

Mrs. Daisy Banks, Leader

**THANK YOU!**

# Lena Jones Rice Missionary March





# COMMUNICATION / TECHNOLOGY

[HOME](#)

[The WMC](#)

[Executive Board 2024](#)

[The Missionary Messenger](#)

[Scholarships](#)

[20th Quadrennial Assembly](#)

[More](#)



## THE WOMEN'S MISSIONARY COUNCIL CHRISTIAN METHODIST EPISCOPAL CHURCH



*Established in 1918*

Quadrennial Theme:

*"Missionaries Boldly Facing New Challenges As We  
Serve A Changing World."*



Dr. Jacqueline I. Scott  
International President

Patron Bishop Charley Hames, Jr





# COMMUNICATION / TECHNOLOGY

## THE MISSIONARY MESSENGER

SEPTEMBER 2024

**59TH BISHOP  
OF THE CME CHURCH**

**1ST WOMAN BISHOP  
OF THE CME CHURCH**

**1ST ECUMENICAL  
BISHOP &  
DEVELOPMENT  
OFFICER OF  
THE CME CHURCH**

**BISHOP TERESA SNORTON**

**PAGE 10**

### VOTER ENGAGEMENT PLAN

#### Educate

Ensure every member of your community is well educated on the following things:

- Who is on your local ballot- what positions are up for election? In 2024, we will be voting for:
  - ◊ Office of the President.
  - ◊ 33 Members of the Senate.
  - ◊ 435 Members of the House of Representatives.
  - ◊ 11 Governors.
  - ◊ Local Elected Offices; and
- State Ballot Initiatives
- The issues shaping this election
- How to register to vote
- How to check their voter registration
- The importance of updating their registration, if needed
- Voter registration deadlines in your state
- How to find their polling location
- When early voting starts or how to obtain a mail in ballot (if applicable)

#### Register

Dates to Remember:

- National Black Voter Day, 9/13 and National Voter Registration Day 9/17
- Get familiar with the rules in your state for voter registration
- Tell you community where and how to register to vote
- Hold voter registration drives in your community, where possible
- Partner with other like-minded non-partisan organizations for voter registration events (Divine Nine, local churches, other community groups)
- Support the National Council of Negro Women's youth vote strategy and partner with local high schools for voter registration drives

#### Mobilize

- Use social media to encourage people to go vote and how to make their own personal voting plan
- Door knock and engage with your neighbors to prepare them to vote
- Corner wave during early voting and election day to remind people to go vote
- Plan, partner and participate in Strolls to the Polls, Souls to the Polls and Party at the Polls events
- Share information about transportation to the polls

#### Protect

- Share the voter protection hotline (1-866-OUR-VOTE) with everyone you know
- If you see something, say something- report issues at the polls to 1-866-OUR-VOTE
- Attorneys - volunteer to staff the Election Protection Hotline
- Sign up to be a social media monitor
- Become a poll worker

8 THE MESSENGER SEPTEMBER 2024

BOLDLY FACING NEW CHALLENGES AS WE SERVE A CHANGING WORLD

### SPIRITUAL LIFE AND MESSAGE BY LOUISE HARDY



**Song:** "Lead Me, Guide Me"

**Prayer:** As the Spirit leads

**Scripture:** 1 Samuel 16:7

Gretchen and Olivia were having a conversation and during this dialogue, the discussion turned to the recent vacancy on the church's Steward Board.

**Gretchen:** You ought to recommend Amira Blue to serve on the Steward Board

**Olivia:** What made you say that?

**Gretchen:** Well, we need a seventh Steward, and she seems like a good person to fill the position. She attends worship services faithfully, in fact, one could call her the perfect bench member. She's pleasant, greets people after service and is out the door before you can blink an eye. And I've never seen or heard about her being rude or mean to anyone.

**Olivia:** Yeah, she does seem like a nice person. But I don't know about recommending Sis. Blue to serve on the Steward Board. I've never had any interaction with her.

**Gretchen:** Well, I'm only suggesting. From all appearances, she is a good fit for the job. I know she works for an accounting firm. She drives a nice car, and dresses like a fashion model. She attends Bible study and supports the church's afternoon programs.

**Olivia:** I'm still not comfortable recommending her, but I'll talk to Pastor Hayes and see what he thinks.

Olivia did have a conversation with Pastor Hayes about Sis. Blue and asked him what he thought about her servicing on the Steward Board. In confidence, he shared with Olivia that Sis. Blue would not make a suitable candidate for the Steward Board at this time. He explained that, Sis. Blue's personal life was currently very unstable. She was living with family members, who were supporting her recovery from a recent tragedy. He told Olivia that one of Sis. Blue's cousins had helped her get a job as a receptionist for an accounting firm, and another cousin let her use his car to drive back and forth to church. Pastor Hayes also told Olivia that Sis. Blue did not hang around after worship service because she didn't want people asking her to join organizations in the church.

**THOUGHT FOR THE MOMENT:** How often do outward appearances dictate our actions towards others? How often do we judge a book by its cover? The above referenced scripture reminds us that we should constantly seek discernment from God when acting upon what we see with our human eyes.

**PRAYER:** Dear Father in Heaven, our Omniscent God, please forgive us when we omit you from our decisions and actions. Help us to not judge or take actions relative to others based upon what we see. Help us to remember that you are always present and that your Holy Spirit is always there to guide us to proceed in the way you would have us to go. These things we ask in the name of your Son, Jesus Christ. Amen.

#### **Polishing Your Communication Power**

1. Discernment 2. Omniscent 3. Placid 4. Wary

- \_\_\_ not easily upset or excited
- \_\_\_ not completely trusting or certain about something or someone
- \_\_\_ perception in the absence of judgment with a view to obtaining spiritual guidance and understanding
- \_\_\_ knowing everything

#### **Last Month Answers**

1-c 2-d 3-b 4-e 5-a

4 THE MESSENGER JULY AUGUST 2024

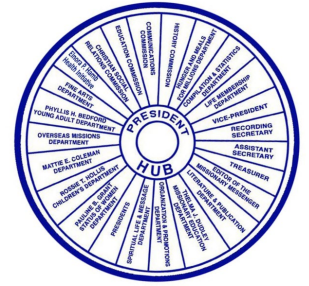
BOLDLY FACING NEW CHALLENGES AS WE SERVE A CHANGING WORLD







# COMPILATION BOOK



## The Women's Missionary Council

of the  
Christian Methodist Episcopal Church  
2<sup>nd</sup> Virtual Executive Board

February 23-25, 2022



ST. LOUIS, MISSOURI

### REPORT BOOK

REGION PRESIDENTS, DIVISION LEADERS, SECRETARIES,  
CHAIRPERSONS & CORRESPONDENTS

HOST PRESIDENTS:

MRS. LIZ BISHOP, DR. LINDA LOGAN AND MRS. MARGUERITE GUY

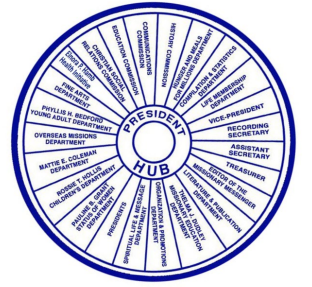


DR. JACQUELINE I. SCOTT, INTERNATIONAL PRESIDENT  
BISHOP JAMES B. WALKER, PATRON BISHOP  
BISHOP SYLVESTER WILLIAMS, SR., HOST BISHOP  
BISHOP LAWRENCE L. REDDICK, III, SENIOR BISHOP

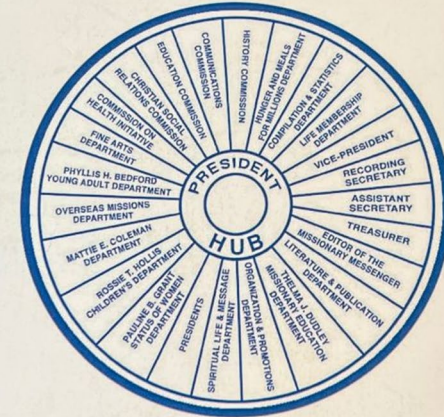




# HANDBOOK



## *Constitution and Bylaws of the Women's Missionary Council*



*Christian Methodist Episcopal Church*



# Organization and Promotions Department

## Online Sales Portal

### Products



#### Fashion Beret

Missionary Tam - \$20.00

**\$20.00**

Quantity

1

Item subtotal: \$0.00



#### Scarf/Wrap

Missionary Shawl - \$20.00

**\$20.00**

Quantity

1

Item subtotal: \$0.00



#### Bonnet

Bonnet-\$10

**\$10.00**

Quantity

1



#### Clear Tote

Clear Tote- \$20.00

**\$20.00**

Quantity

1



#### Crossbody Bag

Crossbody Bag - Clear  
Tote- \$20.00

**\$20.00**

Quantity

1



#### Pearl Bracelet with Pennant

Pearl Bracelet with  
Pennant- \$10.00

**\$10.00**

Quantity

1

Item subtotal: \$0.00



#### Mobile Power Bank

Mobile Power Bank - \$10.00

**\$10.00**

Quantity

1



#### Rubber Bracelet

Rubber Bracelet 2/1.00

**\$1.00**

Quantity

1

THE **BLESSINGS** OF *God*



# The Women's Missionary Council

The Christian Methodist Episcopal Church

*"Missionaries Boldly Facing New Challenges As We Serve A Changing World!"*



# The Women's Missionary Council

The Christian Methodist Episcopal Church

*"Missionaries Boldly Facing New Challenges As We Serve A Changing World!"*



# Thank You!





## 2023-2027 WMC Executive Committee

(l-r): Patron Bishop Charley Hames, Jr.; International President Dr. Jacqueline I. Scott; Vice President Mrs. Calandra Hunter; Recording Secretary Ms. S. Paige Perry; Assistant Secretary Mrs. Deborah Dickenson; Editor of The Missionary Messenger, Mrs. Geraldine Taylor-Winslett; Treasurer Mrs. Carol Ferrell.



# Women's Missionary Council Travels





# Women's Missionary Council Executive Board Meeting 2025







